



P23 HOUSEHOLDS BY PRESENCE OF PEOPLE 60 YEARS AND OVER BY HOUSEHOLD TYPE
 Universe: Households
 2010 Census Summary File 1

Thematic Map of Households with one or more people 60 years and over:
 Geography by: Block Group

NOTE: For information on confidentiality protection, nonsampling error, and definitions, see <http://www.census.gov/prod/cen2010/doc/sf1.pdf>.

Legend:

Data Classes

- 0 - 72
- 77 - 144
- 150 - 229
- 244 - 330
- 361 - 477

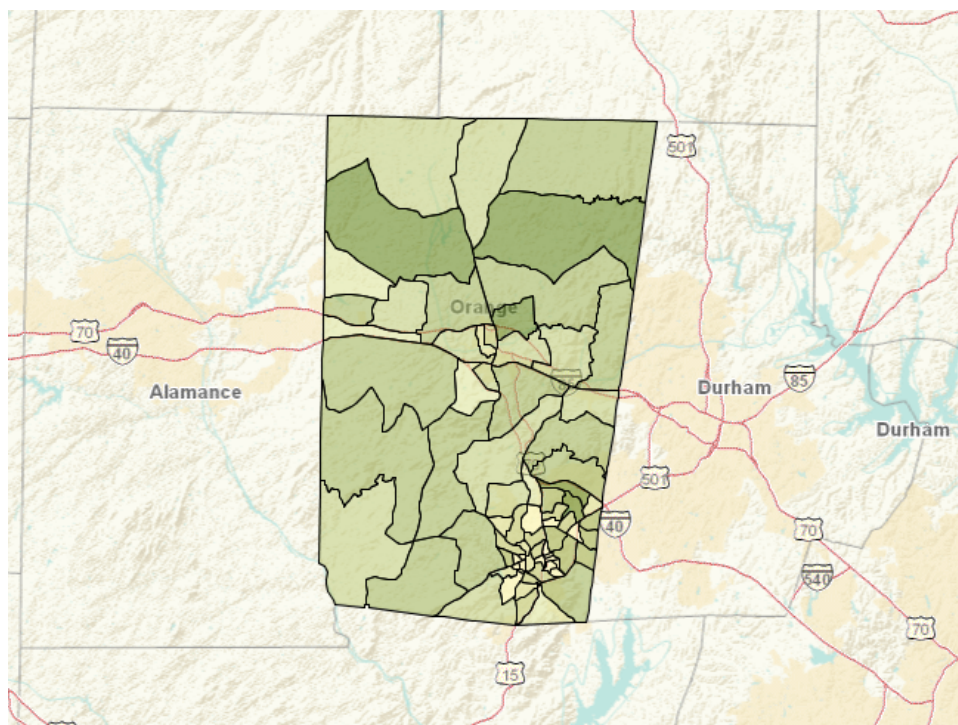
Boundaries

- State
- '10 County

Features

- Major Road
- Street
- Stream/Waterbody

Items in grey text are not visible at this zoom level



NOTE: A household that has at least one member of the household related to the householder by birth, marriage, or adoption is a "Family household." Same-sex couple households are included in the family households category if there is at least one additional person related to the householder by birth or adoption. Same-sex couple households with no relatives of the householder present are tabulated in nonfamily households. Responses of "same-sex spouse" were edited during processing to "unmarried partner." "Nonfamily households" consist of people living alone and households which do not have any members related to the householder.
 Source: U.S. Census Bureau, 2010 Census.