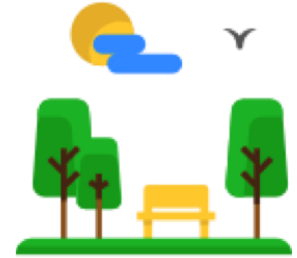




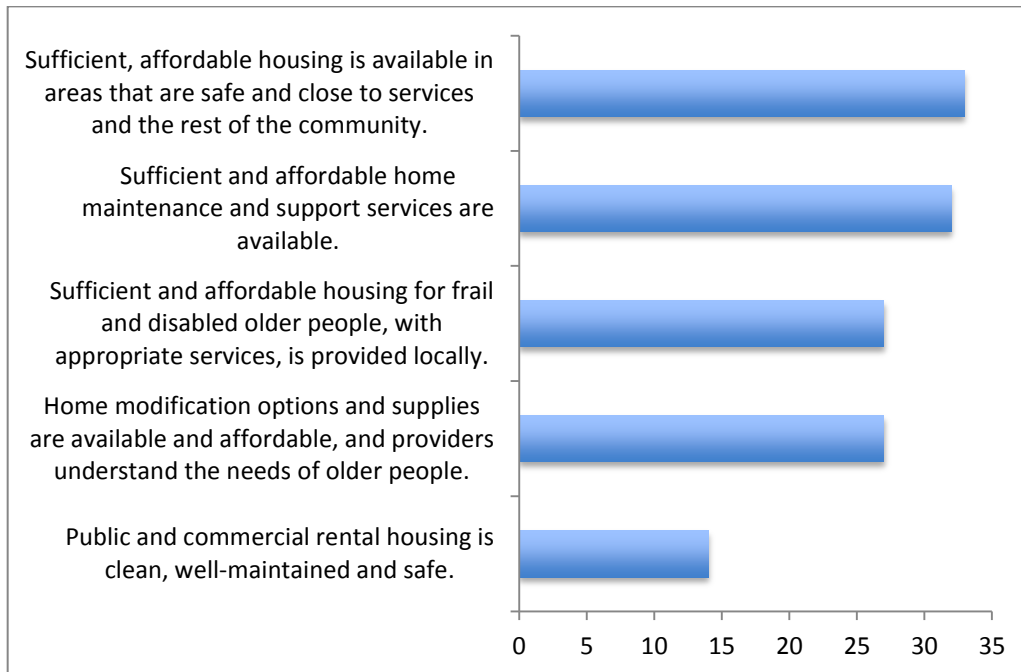
Transportation and Outdoor Spaces & Buildings



- Improve and expand current transportation options
- Improve rural transportation options
- Create regional transit system
- Help with the transition when people give up driving
- Improve and increase sidewalks and walkability
- Increase outdoor gathering spaces and community gardens and better utilization of resources already in the community
- Create multi-generational playgrounds
- Increase availability public restrooms and benches



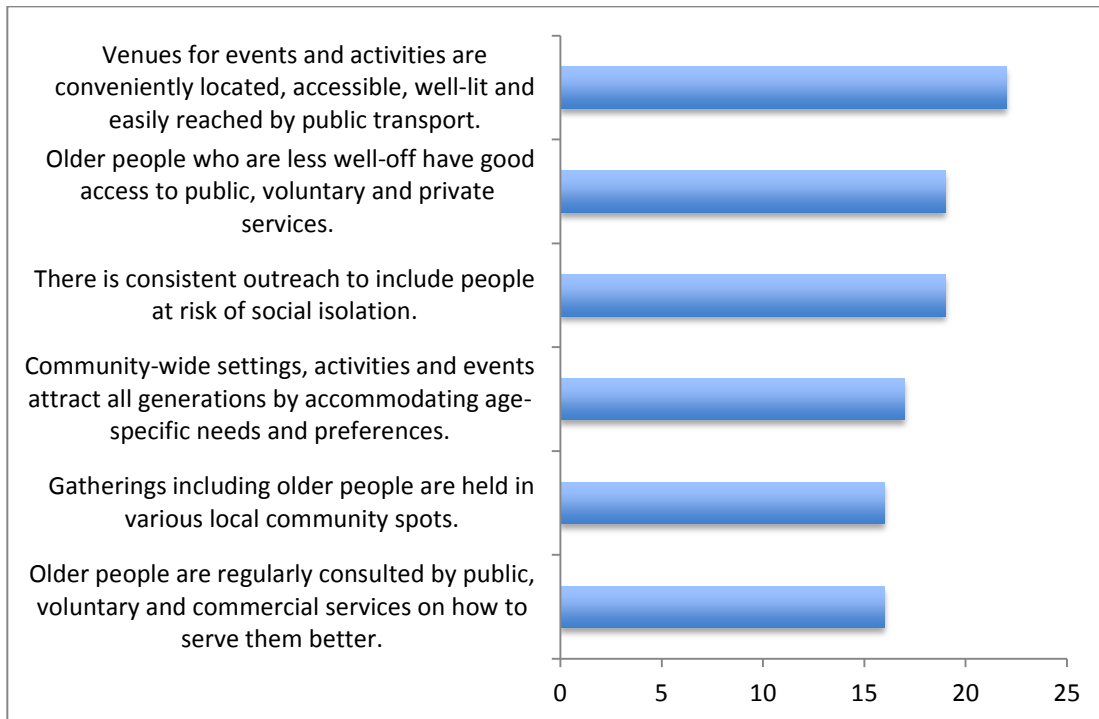
Housing



- Increase diversity and availability of housing models
- Improve affordability of housing
- Improve accessibility of current housing and incorporate Universal Design in new construction
- Locate housing near community resources, sidewalks, and transportation
- Assist older adults who have difficulty maintaining their homes safely and affordably
- Provide information on technology that can assist with safety and security in the home
- Improve long-term care options



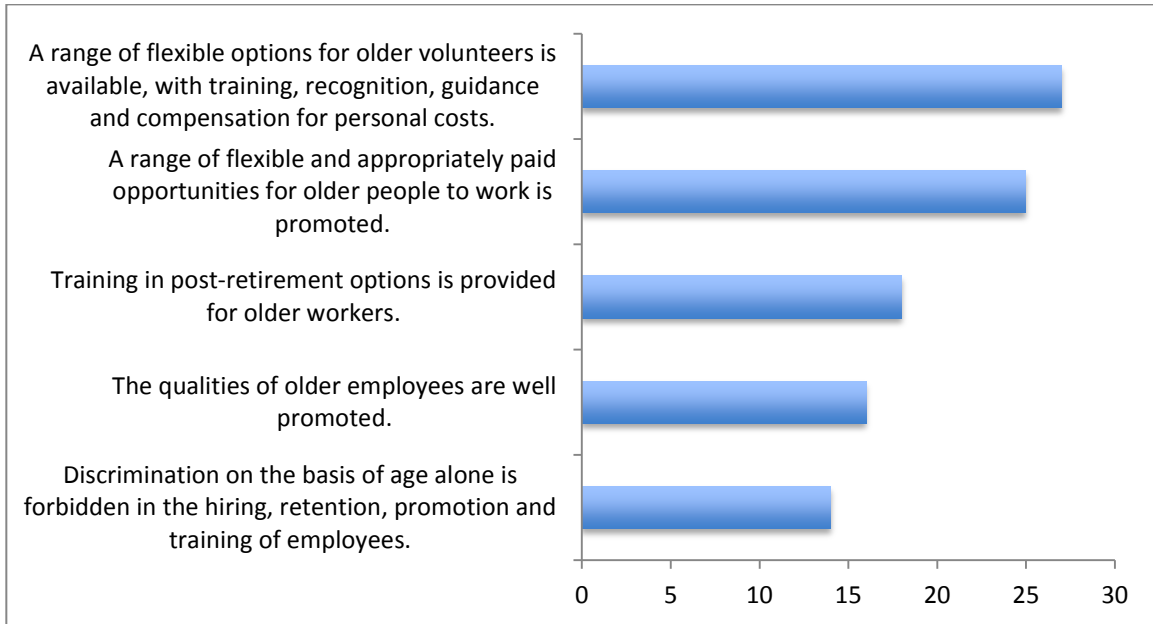
Social Participation and Respect & Social Inclusion



- Build community and cohesion in neighborhoods
- Provide more free community activities at locations across the county (not just senior centers)
- Improve transportation, hours, and pricing for learning and cultural offerings in the community
- Increase educational and enrichment opportunities
- Increase social opportunities for a variety of ages
- Provide opportunities for younger adults to think about how they want to age



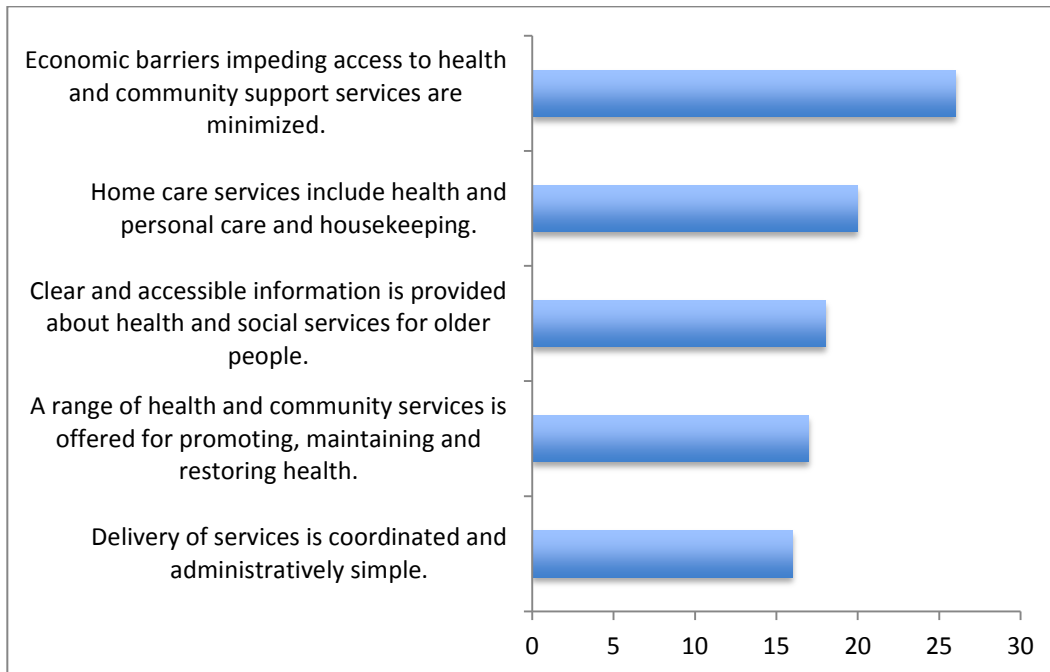
Civic Participation & Employment



- Provide assistance for finding jobs (e.g., older adult temp agencies, contract labor banks, job fair, résumé help, and paid internships)
- Provide meaningful volunteer opportunities
- Compensate fairly for work
- Address age discrimination
- Support caregivers to work and be involved in the community
- Address general financial concerns associated with aging



Community Support and Health Services



- Improve the quality and affordability of in-home and long-term care, as well as respite care and adult daycare
- Expand mental health services in the community
- Provide healthcare advocates to coordinate care and community resources
- Provide someone to talk to about general concerns
- Increase number of dementia-friendly public spaces
- Improve food access, particularly in rural areas
- Provide information about dying with dignity and green burial options