



New Stormwater Requirements

On April 17, 2012 the Orange County Board of Commissioners, adopted changes to *Section 6.14 Stormwater Management* of the Orange County Unified Development Ordinance (UDO). The changes were required to meet the **state mandated** Falls Lake and Jordan Lake Stormwater Rules for New Development (15A NCAC 2B. 0277, 15A NCAC 2B. 0265, Session Law 2009-484).

Both Falls Lake and Jordan Lake are considered polluted due to excessive nutrient inputs and stormwater runoff is one of the major sources. As a result, both lakes have been designated as Nutrient Sensitive Waters by the North Carolina Division of Water Resources.

Through a long stakeholder process, nutrient reduction strategies were developed for both lakes as well as all lands/waters draining to them. To address nutrients from stormwater runoff, reductions will be required from both existing developed areas as well as new development.



Engineered Stormwater “Best Management Practices” (BMPs) like this constructed stormwater wetland at Gold Park in Hillsborough may be required on all new development to meet new stormwater standards.

What’s Required?

These new stormwater requirements apply to all development projects that add impervious surface or “built upon area” within Orange County’s planning jurisdiction. Existing development that adds impervious surface may also be subject to the new standards.

Projects disturbing **as little as 12,000 square feet** may be required to meet the new stormwater standards, which include:

- Submit a professionally prepared site plan/stormwater management plan and review fee.
- Treat/control runoff generated by 1-inch of rainfall;
- 85% total suspended solid removal;
- No increase in peak flow for the 1-year 24-hour storm;
- Meet the nutrient load contribution leaving the site;

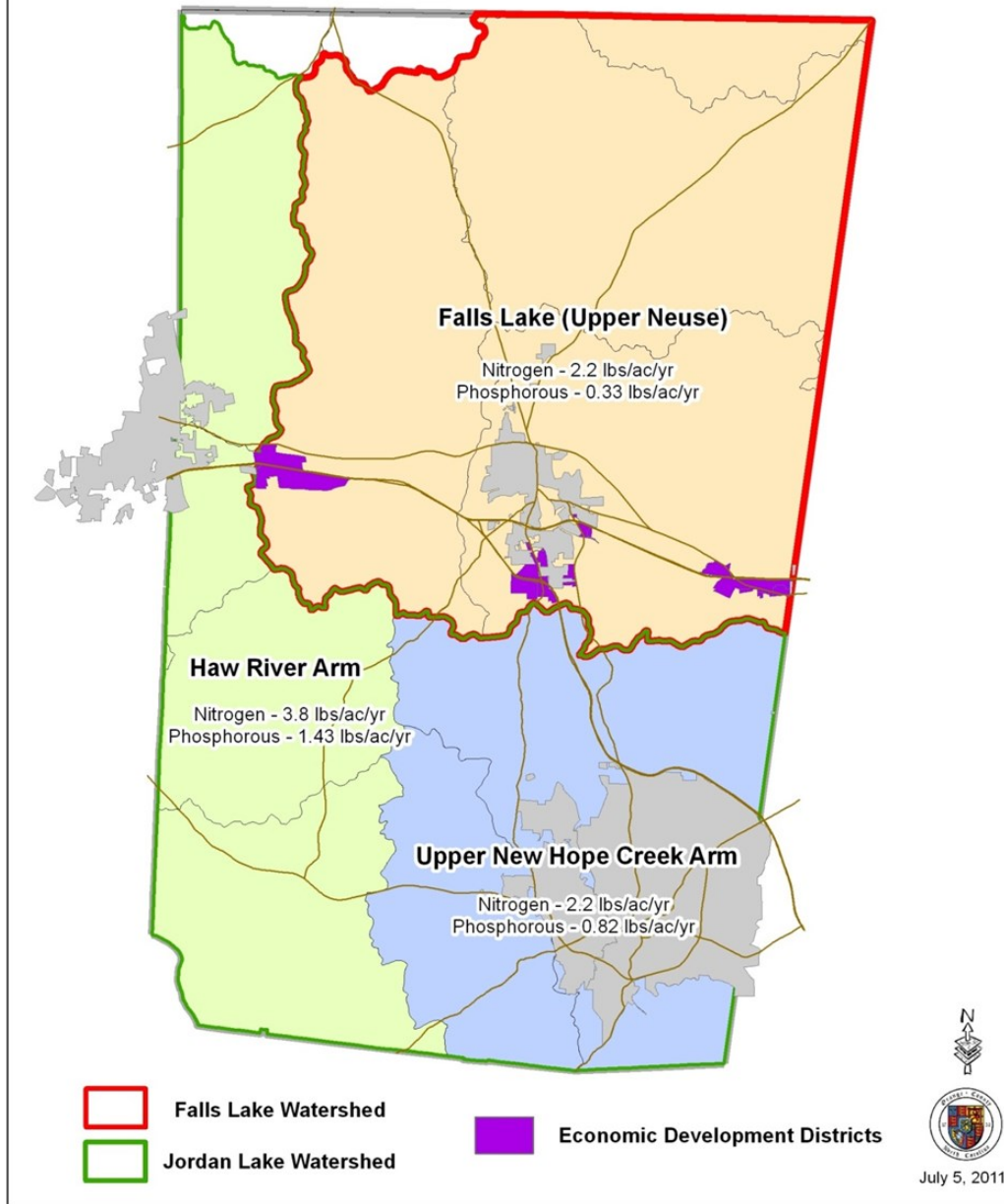
These new stormwater requirements will apply to development projects beginning June 1, 2012.

For More Information Contact:

Wesley Poole, Erosion Control & Stormwater Officer II
Orange County Planning & Inspections
Phone: 919-245-2587 or email: wpoole@orangecountync.gov

Jordan Lake and Falls Lake Rules

State Required Nutrient Loading Rates for New Development



Land Disturbance Thresholds and Nutrient Loading Rates—Orange County UDO

Watershed	Land Disturbance Applicability Thresholds		Sub-watershed	Loading Rate (pounds/acre/year)	
				Nitrogen	Phosphorous
Jordan Lake	Commercial/Industrial	½ acre	<i>Upper New Hope</i>	2.2	0.82
	Residential	1 acre	<i>Haw River</i>	3.8	1.43
Falls Lake	Commercial/Industrial	12,000 sq ft	<i>Entire watershed</i>	2.2	0.33
	Residential	½ Acre			