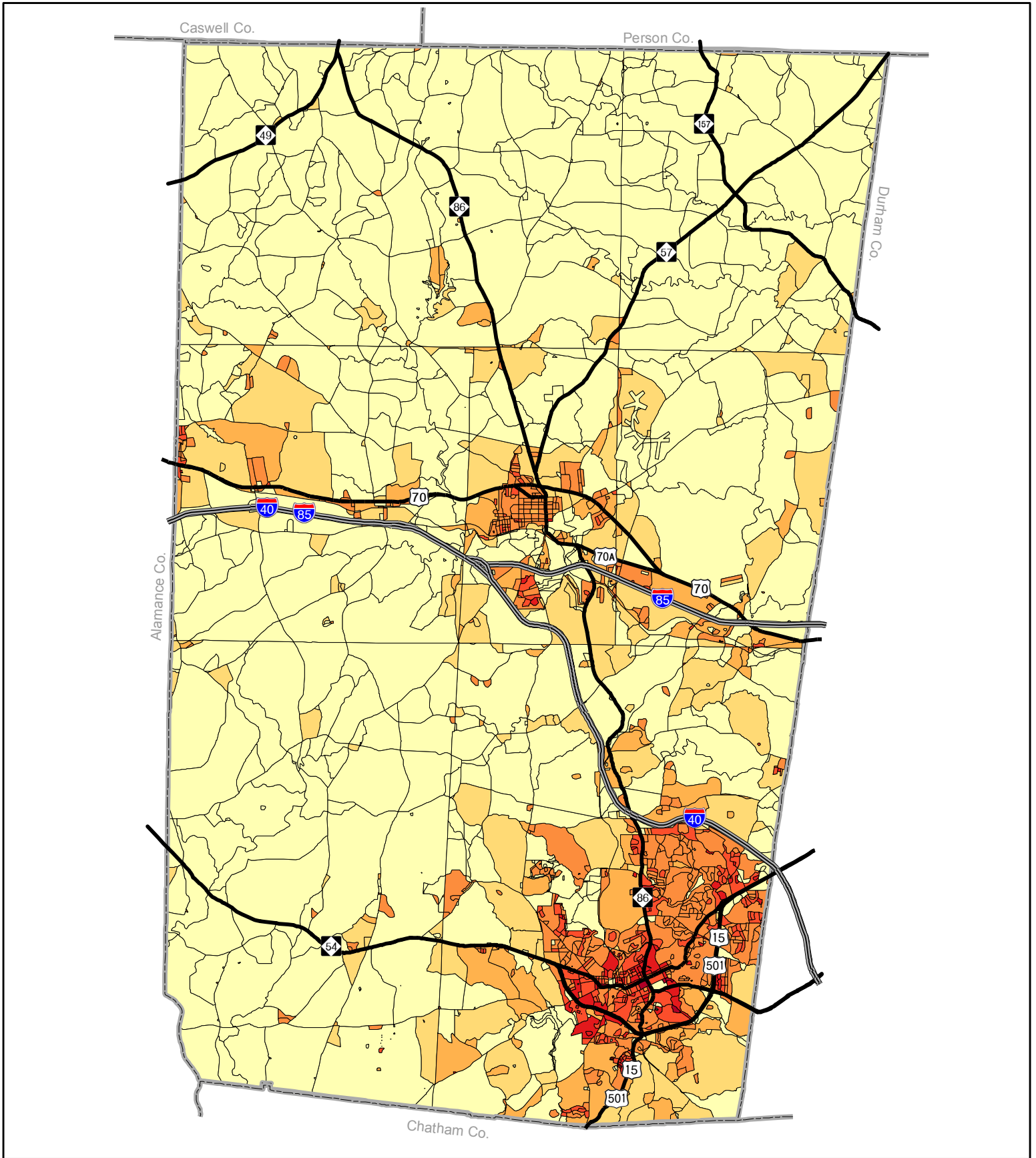


Orange County Population Density (Census 2000)



Density (People per Acre)	
0 - 0.25	1.001 - 5
0.2501 - 0.5	5.001 - 10
0.5001 - 1	10.01 - 50
	50.01 - 260



1 inch equals 3 miles
 0 1 2 3 Miles

Orange County Planning and Inspections Department
 GIS Map Prepared by Brian Carson July 11, 2006