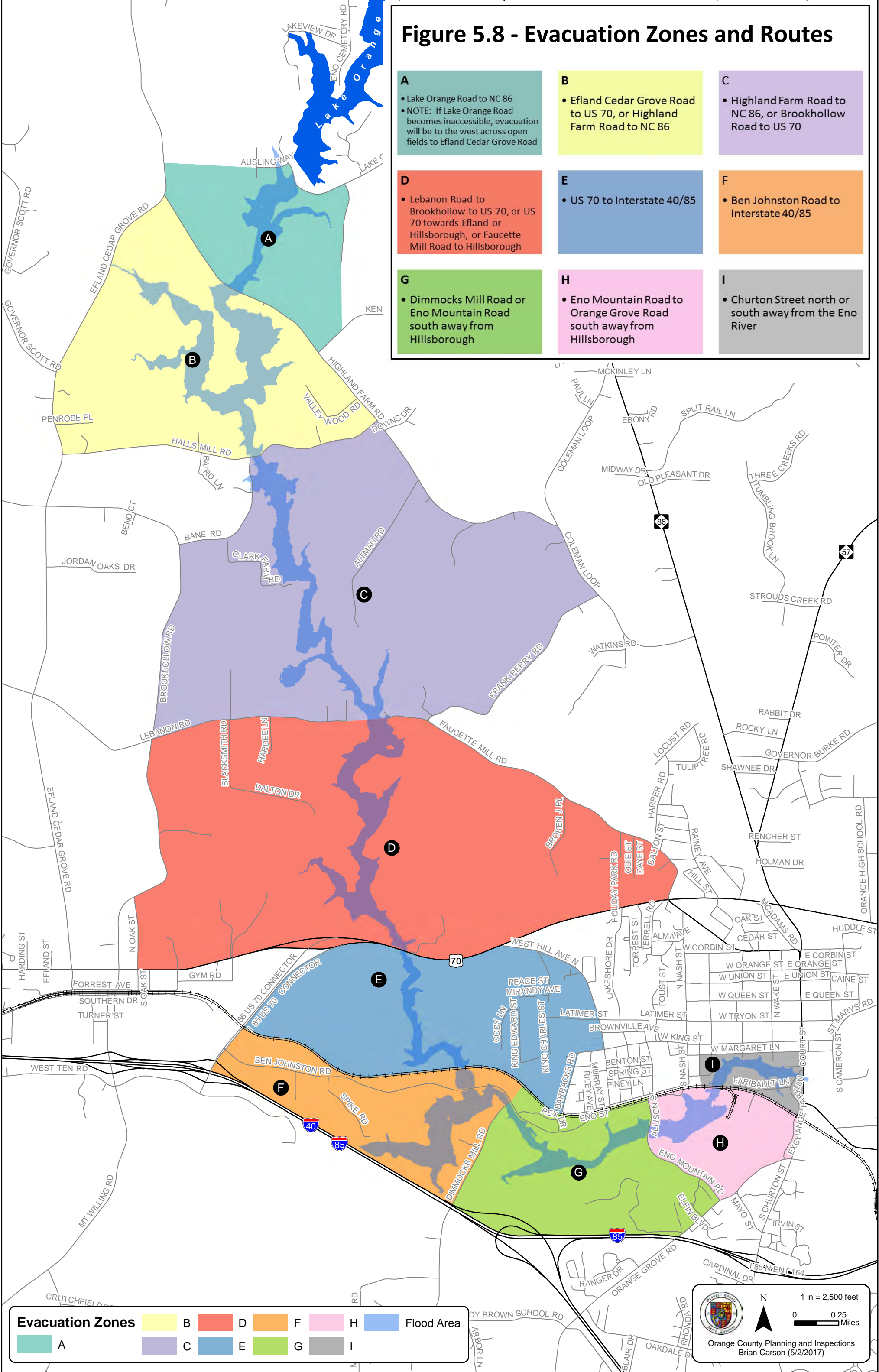


Figure 5.8 - Evacuation Zones and Routes

- | | | |
|--|--|--|
| A <ul style="list-style-type: none"> Lake Orange Road to NC 86 NOTE: If Lake Orange Road becomes inaccessible, evacuation will be to the west across open fields to Efland Cedar Grove Road | B <ul style="list-style-type: none"> Efland Cedar Grove Road to US 70, or Highland Farm Road to NC 86 | C <ul style="list-style-type: none"> Highland Farm Road to NC 86, or Brookhollow Road to US 70 |
| D <ul style="list-style-type: none"> Lebanon Road to Brookhollow to US 70, or US 70 towards Efland or Hillsborough, or Faucette Mill Road to Hillsborough | E <ul style="list-style-type: none"> US 70 to Interstate 40/85 | F <ul style="list-style-type: none"> Ben Johnston Road to Interstate 40/85 |
| G <ul style="list-style-type: none"> Dimmocks Mill Road or Eno Mountain Road south away from Hillsborough | H <ul style="list-style-type: none"> Eno Mountain Road to Orange Grove Road south away from Hillsborough | I <ul style="list-style-type: none"> Churton Street north or south away from the Eno River |



Evacuation Zones

 B	 D	 F	 H	 Flood Area
 A	 C	 E	 G	 I

N
 1 in = 2,500 feet
 0 0.25 Miles
 Orange County Planning and Inspections
 Brian Carson (5/2/2017)